

Montgomery Ward Adams 351

Fabricant (si # de la marque) :		Pays de fabrication :	Allemagne
Début de fabrication :	1958	Fin de fabrication :	0
Rareté :	Rare	Page du McKeown :	698
Type d'appareil :	Compact		

Film

Type de film :	135	Nombre maxi de vues :	36
Format :	24 x 36 mm	Format :	
Format :		Format :	
Avancement :	Levier	Position :	Sur le capot
Rembobinage :	Molette/CIÃ©	Position :	Sur le capot

Exposition

Cellule :	Non	Position :	
Sensibilité :			

Obturbateur

Marque de l'obturateur :	Gauthier (AGC)	Modèle de l'obturateur :	Pronto
Type d'obturateur :	Central	Vitesses :	1 Å 1/200, B

Objectif

Type d'objectif :	Standard	Montage de l'objectif :	Fixe
Marque de l'objectif :	Leidolf	Modèle de l'objectif :	Triplon
Monture d'objectif :		Mode de map :	Distance choisie sur l'optique
Focale :	5 cm	Ouverture maxi :	2,8

Divers

Type de pile :		Couleur du soufflet :	
Forme du soufflet :		Décentrement horizontal :	
Décentrement vertical :		Second viseur :	
Type de viseur :	Interne fixe		

Voici l'histoire de la famille Addams... pardon, de la famille Adams. Celle-ci n'a rien à voir avec la célèbre série américaine des années 60 ! Malgré tout nous allons parler de la Chose.

Les Adams 351 et 352 sont une série d'appareils fabriquée pour le distributeur américain Montgomery Ward par Leidolf, en Allemagne. Ward ne fait pas trop secret du nom du constructeur, puisque la marque est très visible sur les objectifs. Par ailleurs, l'argumentaire situe bien le constructeur à Weitzlar.

Cet Adams 351 est très proche du Lordox Baby.

Ward a donné le nom d'Adams à d'autres accessoires photographiques sans point commun avec Leidolf.

www.collection-appareils.fr

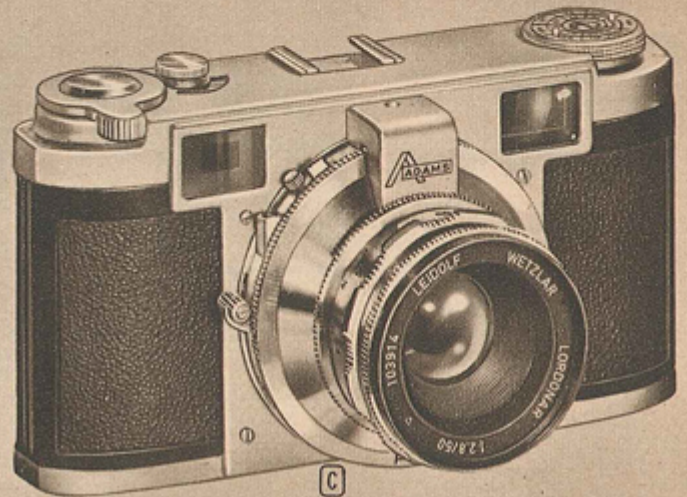
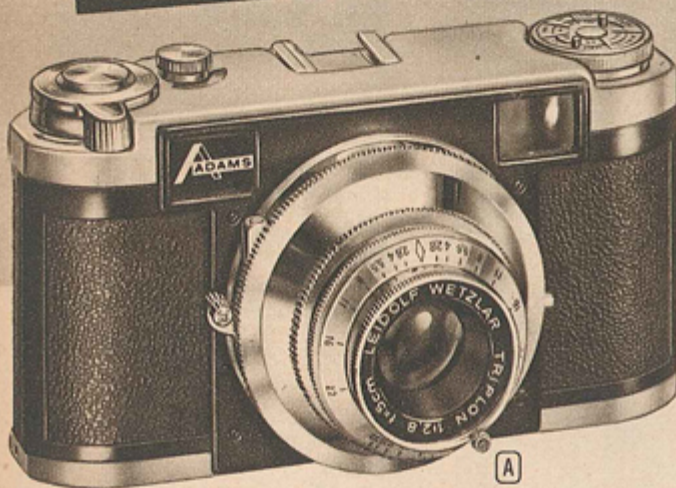
Your Best Buy... 35mm

WARDS SAVE YOU MONEY BECAUSE WE SAVE

Exclusive at Wards

Adams 35 mm Cameras are made by an old established firm in Western Germany. Imported directly by Wards Import Division—savings from Importer and Distributor costs passed on to you. You will be delighted with their appearance and built-in superiority. Buy an Adams with confidence—"Satisfaction Guaranteed, or Your Money Back."

All 4 Cameras Have Interchangeable Lens Mount...



Adams 351—Takes 4 Lenses \$38⁹⁵

COMPLETE WITH 3 ELEMENT f/2.8 LENS

A "How can they sell a camera like this for only \$38.95" will be your reaction to the Adams 351. Actually, it is possible only because Wards import this fine camera directly from the Factory in Westlar, Western Germany, saving importer and distributor costs. You will recognize the superb workmanship, superior lens and picture-making ability that are always the earmark of fine German cameras.

Adams 351 was designed for the every-day photographer who wants the flexibility to take pictures with Telephoto and Wide Angle lenses in addition to normal 50 mm lens shots. With the 351 you can do just that—just screw in any of the 3 lenses, estimate foot distance from subject-to-camera, adjust lens opening and snap the picture!

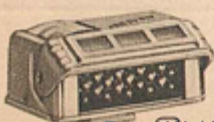
Rapid-wind film advance winds film, counts exposures, and cocks shutter all in one swift stroke... prevents double exposures and blanks. Complete with 3-element f/2.8 Triplon 50 mm lens. Shutter has 4 speeds from 1/25 to 1/200-sec. plus B. Synchronized for No. 5 or 25 bulbs at 1/50-sec., electronic flash at all speeds. Order Flash with PC fitting, Pg. 41.

Built-in self-timer. Takes 20 or 36 pictures on 35 mm film... slides, Kodacolor or black-and-white. Interchangeable lens mount accepts wide angle or telephoto lenses sold at right.

Built-in film reminder, on re-wind knob. Die-cast aluminum body; black leatherette covering, chrome trim. Handy accessory clip.

67 H 411 L—Ship. wt. 3 lbs. Only \$4 Down.....Cash \$38.95
67 H 413—Top-Grain leather Eveready Case, Ship. wt. 8 oz. 5.75
67 H 2258—Screw-in Adapter Ring for Adams 351 Camera. Order Series 5 Filters on Page 19. Ship. wt. 2 oz.....\$1.79

Wedena Exposure Meter with Leather Case



B Fits Cameras (A) and (C) above... (D) on Pg. 7, or any camera with accessory clip. Shows correct exposure from 60 to 1/1000-sec. Lens openings from f/2 to f/22. Measures both reflected and incident light. ASA film index. Made in Germany.
67 H 2165 L—Ship. wt. 4 oz. Only \$14.95

Adams 352—with Rangefinder \$58⁹⁵

FOCUSES ALL LENSES AUTOMATICALLY

C Adams 352 Camera has a built-in, coupled rangefinder that gives you perfect focus every time... when rangefinder is in focus, lens is automatically in focus. Focusing is easy—simply press focusing ring with either right or left index finger to bring image into sharp focus in bright-frame viewfinder. Accessory lenses sold below, also focus automatically with rangefinder; special Finders (J and K below) show you field of view of accessory lenses.

4-element 50 mm Lordonar f/2.8 lens takes brilliant slides or Kodacolor, needle-sharp black-and-white negatives. Takes 20 or 36 exposures on 35 mm film. Pronto shutter has 4 speeds from 1/25 to 1/200-sec. plus B. Built-in self-timer. Synchronized for No. 5 and 25 flash bulbs at 1/50-sec. and electronic flash at all speeds. Order any Flash Gun with PC fitting on Page 41.

Rapid-wind lever operates by quick thumb-stroke... advances film, counts exposures, cocks shutter, prevents double exposures and blanks. Die-cast aluminum body, with black leatherette covering and chrome trim. Handy accessory clip. To capture clouds and sunsets with your Adams, you will need filters which must be held in place with an Adapter Ring. Order Series 6, No. 62 Adapter Ring (67 H 2201, sold on Page 19). Dramatic salon-type pictures are often made with the use of a Red "A" Filter, or with the Pola Screen, also sold on Page 19. Film-type reminder built into re-wind knob.

67 H 412 L—Ship. wt. 1 lb. 8 oz. Only \$6 Down.....Cash \$58.95
67 H 413 X—Top-Grain leather Eveready Case, Ship. wt. 8 oz. 5.75

Accessory Lenses for All Adams and

