

AnSCO Automatic Reflex

Fabricant (si # de la marque) :		Pays de fabrication :	Etats-Unis
Début de fabrication :	1947	Fin de fabrication :	1950
Rareté :	Rare	Page du McKeown :	55
Type d'appareil :	Reflex TLR		

Film

Type de film :	120	Nombre maxi de vues :	12
Format :	6 x 6 cm	Format :	
Format :		Format :	
Avancement :	Levier	Position :	Sur le coté
Rembobinage :	Non	Position :	-

Exposition

Cellule :	Non	Position :	
Sensibilité :			

Obturateur

Marque de l'obturateur :	AnSCO	Modèle de l'obturateur :	
Type d'obturateur :	Central	Vitesses :	1/2 à 1/400, B

Objectif

Type d'objectif :	Standard	Montage de l'objectif :	Fixe
Marque de l'objectif :	Wollensak	Modèle de l'objectif :	Velostigmat
Monture d'objectif :		Mode de map :	Image réelle sur diapositive
Focale :	83 mm	Ouverture maxi :	3,5

Divers

Type de pile :		Couleur du soufflet :	
Forme du soufflet :		Décentrement horizontal :	
Décentrement vertical :		Second viseur :	
Type de viseur :	Image réelle sur diapositive		

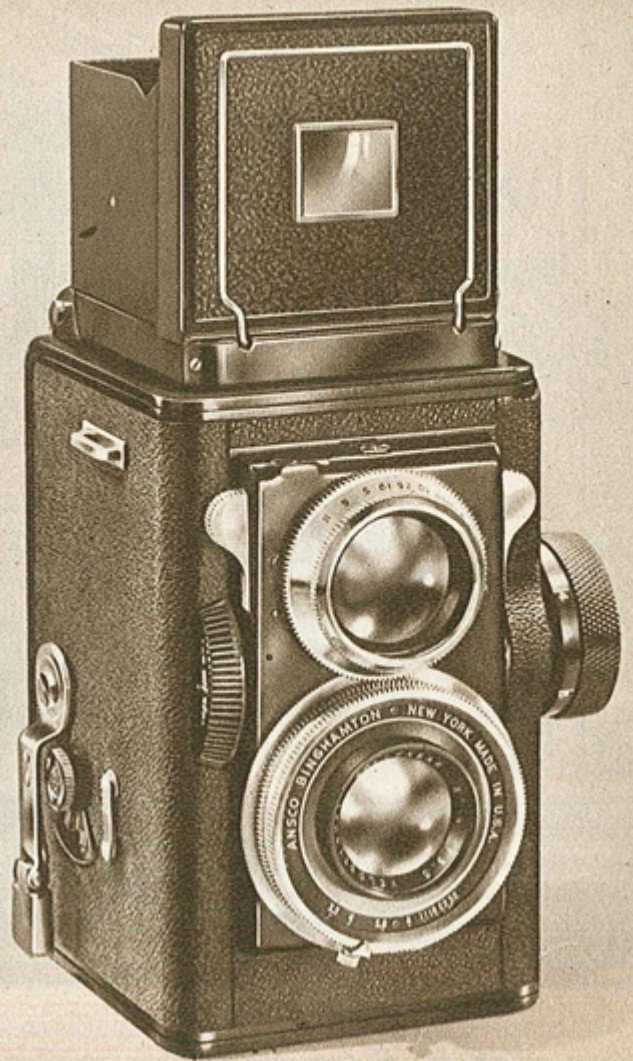
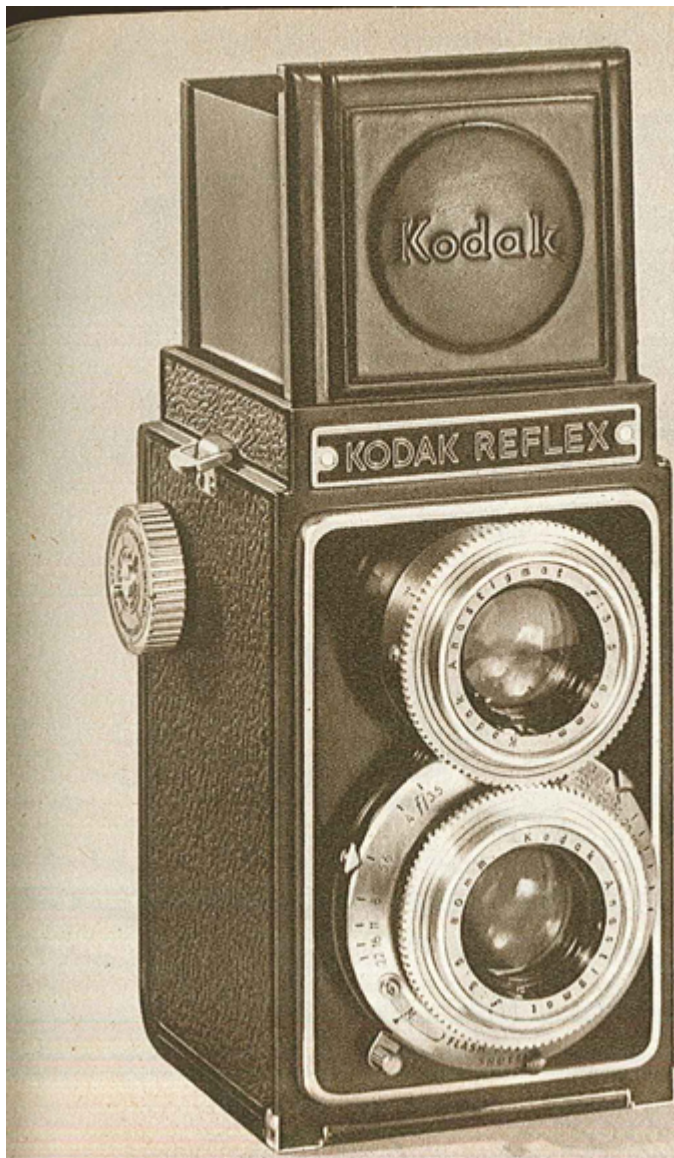
Ce modèle est assez rare même aux USA où il est sorti en 1947. Son prix était alors très élevé (ce qui explique sa rareté), mais son niveau de qualité l'était également. Les américains ont été peu présents sur le marché du reflex bi-objectif haut de gamme, contrairement aux allemands et aux japonais (plus tard), et cet appareil constitue une des exceptions.

C'est un vrai reflex ; les deux objectifs sont couplés. La mise au point se fait à l'aide d'une grosse molette latérale, un levier, à l'opposé, permet l'avance du film (mais pas l'armement de l'obturateur sur les premiers exemplaires). . Les réglages de vitesse et d'ouverture se présentent sous la forme de deux autres molettes affleurant sur la façade de chaque côté des objectifs.

Les doubles ou triples expositions sont permises grâce à un déverrouillage. Il y a un compteur de vues prises, ce qui est rare sur un appareil au format 120.

Ce premier modèle a en plus de la visée sur dépoli, avec loupe, un viseur à cadre pour les cadrages rapides.

www.collection-appareils.fr



... Full Size and Right Side Up!

New Eastman Kodak Reflex Camera

A reflex type camera built to highest Kodak standards. Takes 12 pictures size 2 1/4 x 2 1/4 in. on standard 620 film.

LENS AND SHUTTER. Picture taking lens is the Kodak anastigmat f/3.5 color corrected lens with 80 mm. (3 1/4 in.) focal length. All optical surfaces of lens are coated to reduce reflections. Viewing lens is a matching f/3.5 Kodak anastigmat. Kodamatic shutter has wide range of speeds—1/2, 1/5, 1/10, 1/25, 1/50, 1/100, and 1/200 second, time and bulb. Lens focuses from 3 1/2 feet to infinity, has apertures graduated from f/3.5 to f/22.

OPERATING CONTROLS. Simplified shutter has set and release on same lever. Depth of focus scale works automatically with lens focusing, shows depth of field in correct focus at every diaphragm opening. Shutter has improved built-in flash synchronization for use with any flash bulbs without need for adjustment. See Page 17 for story on built-in synchronization.

FOCUSING SCREEN. Self-actuating folding hood snaps into position by pressing release button. Front part of hood can be pressed down to use wire frame sportsfinder, for shooting fast action shots. Ground glass screen is full negative size, 2 1/4 by 2 1/4 inches—shows brilliant image of subject. Hinged magnifier on hood for critical spot focusing where needed.

CONSTRUCTION FEATURES. Extra tripod socket on side of body for use in close quarters. Mounting bracket for installing flash gun attachment. Red film window has spring actuated cover. Film winding knob has dial which can be set to remind you which kind of film is in camera. Hinged back for easy film loading—film spools press into place, are held by spring tension. Back can be removed entirely if desired. Body is all metal with Morocco grain finish. Neck strap brackets built into case. Lens mount diameter 1 1/2 inch (38 mm.). Brown leather ever-ready case with shoulder straps. 10% down—no charge for credit.

67 CW 207LT—Camera and case. Postpaid..... 120.42

67 CW 210LT—Camera, case, and flashholder 67 CW 3256T as shown on Page 56 and front cover. Postpaid..... 131.42

Anso Reflex with Automatic Film Transport

The Anso Reflex is built to appeal to the discriminating photographer who takes pride in owning and using the finest in camera equipment. It has an extremely wide range of shutter speeds and several automatic operating features which make it unique in the reflex camera field.

Focusing is fast and accurate by means of a large knob located on left side of camera body. Positive synchronization between viewing and picture taking lenses by direct coupling of the lenses with geared focusing rings. Extra wide range of shutter speeds gives almost unlimited choice of subject material. High speed settings stop fast sports action; slow speed settings excellent for color work and special effects. Takes 12 pictures size 2 1/4 by 2 1/4 inches on standard 120 (B2) roll film.

LENS AND SHUTTER. Picture taking lens is a coated, color corrected f/3.5 Wollensak Velostigmat with 83 mm. focal length. Matching f/3.5 focusing lens produces full size, brilliant image on ground glass screen. Precision set-and-release type shutter has speeds of 1/2, 1/5, 1/10, 1/25, 1/50, 1/100, 1/200 and 1/400 seconds plus bulb position. Aperture settings graduated from f/3.5 to f/32. Focusing range is from 3 feet 8 inches to infinity by rotating calibrated focusing knob. Shutter release and set controls are conveniently located at either side of lens panel.

OPERATING CONTROLS. Automatic film transport lever on right side of case advances film to correct position. Automatic locking device prevents double exposures—shutter will not set or release until film is advanced. Special release lever will permit double or multiple exposures on a single frame where desired for special effects. Film exposure window records number of frames used, has zero setting knob.

FOCUSING SCREEN. Full negative size 2 1/4 by 2 1/4 in. ground glass focusing screen shows brilliant image of subject while composing and taking the picture. Hood springs into position by pressing button—folds automatically when pressed down. Extra optical type eye-level finder. Sportsfinder for following fast action. Built-in hinged magnifier for critical focusing.

CONSTRUCTION FEATURES. Tripod socket recessed in center of bottom frame. Cable release and flash gun synchronizer socket on top edge of lens panel directly over viewing lens. Back is hinged for easy film loading. Camera body is made of durable metal with rich black pin seal leather covering. All trimwork is satin finished chromium. Built-in neck strap eyelets. Lens mount diameter, 1 5/16 inch (33 mm.). Only \$23.70 down, \$16 a month on monthly payments—see Page 119 for full explanation of Wards Monthly Payment Plan. No extra charge for credit on this item.

67 CW 202LT—Camera with brown leather ever-ready case. Postpaid..... 237.00