

## Certo Dollina III

---

Fabricant (si # de la marque) :		Pays de fabrication :	Allemagne
Début de fabrication :	1937	Fin de fabrication :	1939
Rareté :	Rare	Page du McKeown :	196
Type d'appareil :	Folding		

### Film

---

Type de film :	135	Nombre maxi de vues :	36
Format :	24 x 36 mm	Format :	
Format :		Format :	
Avancement :	Molette/CIÃ©	Position :	Sur le capot
Rembobinage :	Molette/CIÃ©	Position :	Sur le capot

### Exposition

---

Cellule :	Non	Position :	
Sensibilité :			

### Obturbateur

---

Marque de l'obturateur :	F. Deckel	Modèle de l'obturateur :	Compur-Rapid
Type d'obturateur :	Central	Vitesses :	1 Ã 1/500, B, T

### Objectif

---

Type d'objectif :	Standard	Montage de l'objectif :	Fixe
Marque de l'objectif :	Schneider-Kreuznach	Modèle de l'objectif :	Xenar
Monture d'objectif :		Mode de map :	TÃ©lÃ©mÃ©trique couplÃ©e
Focale :		Ouverture maxi :	2,8

### Divers

---

Type de pile :			
Forme du soufflet :	Conique	Couleur du soufflet :	Noir
Décentrement vertical :	Non	Décentrement horizontal :	Non
Type de viseur :	Interne fixe	Second viseur :	

Le Dollina III est le successeur du Dollina II. C'est un Dollina II redessiné (le boîtier est plus épais) pour éliminer la protubérance peu esthétique du télémètre. Le Dollina III est chromé alors que le Super Dollina II est noir.

Il a été remplacé en 1938 par le Super Dollina, mais c'est le Dollina II qui lui a servi de base.

# Leca Junior



9 X 12 cm Cut Film and Plate  
**PRECISION CAMERA**

and costs you only **\$11.95** with  
F: 6.5 LENS  
IN  $\frac{1}{25}$  TO  $\frac{1}{100}$   
SHUTTER

Lens only **\$8.95**  
Box only **\$4.95**

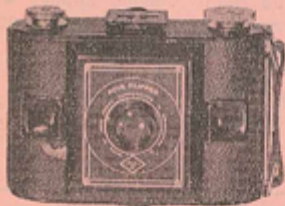
For picture fun or picture profit the Zeca Junior provides the beginner or advanced photographer with successful pictures at a substantial saving. Worth \$25, this new camera uses plates, cut film or film packs in the popular 9x12 cm (3 1/4 x 4 1/4 inch) size.

With ground glass focusing back for better results in composing your pictures; genuine leather bellows; rising and falling front; reversible brilliant finder for vertical and horizontal pictures; focusing scale; single extension.

Included at this price is a sharp anastigmat F:6.5 lens with shutter operating at 1/25, 1/50, 1/100, time and bulb. Complete with three plate holders and one film pack adapter. Shpg. wt. 4 lbs.

- 9x12 cm Film Sheath ..... \$ .10
- 9x12 cm Film Pack Adapter.....
- Velour lined brown leather carrying case.....
- Trojan Sunshade..... \$1.75
- 9x12 cm Plate Holder..... \$ .90
- Opto Filters for use with Trojan Sunshade..... 3.75
- ..... 5.50
- ..... 1.65

## AGFA CLIPPER



A new type of candid camera . . . compact, sturdy, simple, economical. Pull out the front snap up the eye-level direct-view finder. The new Agfa Clipper is ready for use.

Takes 15 pictures 2 1/8 x 2 1/2 inches on standard 616 rollfilm. Universal focus Unifo lens, instantaneous and bulb-exposure shutter; sturdy steel body with black covering and nickel trim, smart modern lines. Measures 2x3 1/2 x 5 inches.

Wt. 16 oz.  
Shpg. wt.,  
2 lbs. **\$4.50**

- 616 Film Verichrome..... \$ .35
- 616 Film Panatomic..... .40
- Carrying Case..... 1.59
- Yellow Filter..... 1.19
- Portrait Attachment..... .74

## New CLIPPER SPECIAL

A new model with fast F6.3 lens. Shutter speeds 1/25 to 1/100, T & B. Optical, direct-view finder, shutter release guard, depth of focus scale. All other specifications same as regular Clipper above **\$17.25** each.

Accessories same as regular Clipper accessories.

## 35 M/M DOLLINA

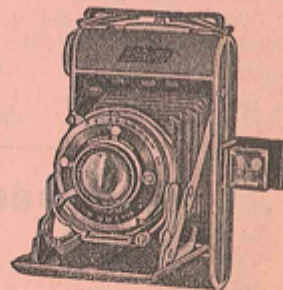


DOLLINA Miniature Cameras are priced with a moderation unusual in this field. However, economy is just a final and additional reason for the popularity of these instruments — for their quality is as high as their prices are low. They are manufactured by one of the most important camera factories in the world. Use regular 35 mm. film for 36 exposures 1" x 1 1/2". Equipped with Compur-Rapid Shutter (1-1/500, T & B). Shpg. wt., 3 lbs.

- DOLLINA II with coupled range finder with Radionar F2.9 NET \$52.50
- with Xenar F2.8 NET 60.00
- with Tessar F2.8 NET 67.50
- with Xenon F2 NET 75.00

- DOLLINA III—Same, but streamlined design chrome finish, parallax compensation
- with Radionar F2.9 NET \$58.50
- with Xenar F2.8 NET 72.00
- with Tessar F2.8 NET 83.25
- with Xenon F2 NET 87.75
- Eveready Cases for model II NET \$4.95
- for model III NET 7.20

## SUPER-SPORT DOLLY



Beautifully precision made for top quality pictures. Has High Speed lenses — ideal for poor light and cloudy weather. Focuses to 5 ft. Optical finder. Compur Shutter 1 to 1/250. Built-in self timer. Picture size: 16—1 5/8 x 2 1/4 or 12—2 1/4 x 2 1/4 on 120 roll film. Size 5 3/4 x 3 3/8 x 1-9/16, wt., 22 oz. Shpg. wt., 3 lbs.

- with 3" Meyer F2.9 NET \$31.50
- with 3" Xenar F2.8 NET 39.75
- with 3" Tessar F2.8 NET 48.75

Same with built-in range finder and exposure meter.

- with 3" Xenar F2.8 NET \$58.50
- with 3" Tessar F2.8 NET 69.75

For Compur-Rapid Shutter 1—1/400, add \$5.00