

Sears Tower 30

Fabricant (si # de la marque) :		Pays de fabrication :	Allemagne
Début de fabrication :	1959	Fin de fabrication :	0
Rareté :	Peu courant	Page du McKeown :	
Type d'appareil :	Reflex TLR		

Film

Type de film :	120	Nombre maxi de vues :	12
Format :	6 x 6 cm	Format :	
Format :		Format :	
Avancement :	Molette/CIÃ©	Position :	Sur le cotÃ©
Rembobinage :	Non	Position :	-

Exposition

Cellule :	Non	Position :	
Sensibilité :			

Obturbateur

Marque de l'obturateur :		Modèle de l'obturateur :	
Type d'obturateur :	Central	Vitesses :	1 Ã 1/300, B

Objectif

Type d'objectif :	Standard	Montage de l'objectif :	Fixe
Marque de l'objectif :		Modèle de l'objectif :	Anastigmat
Monture d'objectif :		Mode de map :	Image rÃ©elle sur dÃ©poli
Focale :	75 mm	Ouverture maxi :	3,5

Divers

Type de pile :		Couleur du soufflet :	
Forme du soufflet :		Décentrement horizontal :	
Décentrement vertical :		Second viseur :	
Type de viseur :	Image rÃ©elle sur dÃ©poli		

Ce TLR a une origine germanique. C'est un Bolta Photina Reflex III.

www.collection-appareils.fr

www.collection-appareils.fr

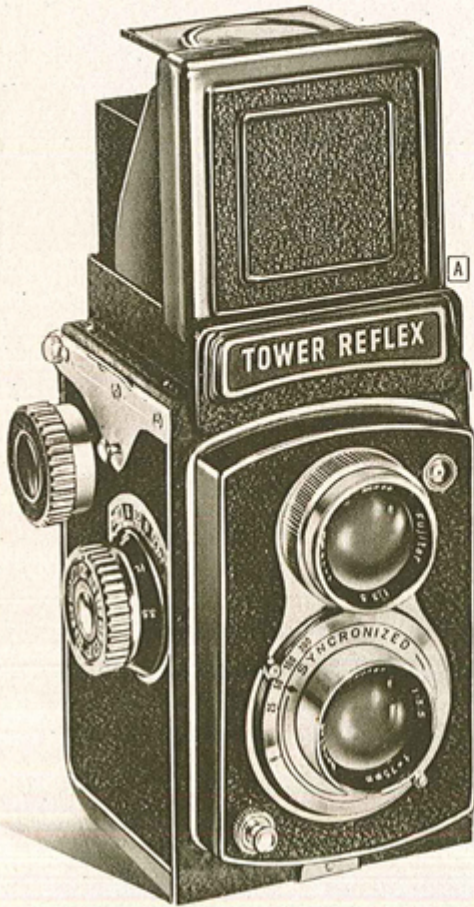


TOWER Twin-lens Reflex Cameras

Priced so low . . . yet look at these dramatic results



Exposure: 1/100 sec. at f:11



You'll be thrilled with the beautiful pictures you can get with a TOWER Reflex. These cameras have been proved and tested by Sears . . . and we believe they are outstanding money-saving values! You get many valuable features usually found only on twin-lens reflex cameras priced much higher.

Our lowest-priced TOWER Twin-lens Reflex with sharp f:3.5 80mm anastigmat lens

Camera only **\$18⁹⁵**

- High-speed coated lens gives clear, sharp pictures . . . color will be brilliantly vivid
- Shutter speeds from 1/25 to 1/300 sec. and time . . . synchronized for flash and speedlight
- Big ground glass viewfinder permits accurate visual focusing from 3½ feet to infinity

A With the reflex viewfinder you see exactly what will appear in the picture before you take it . . . permits better composition in all your pictures. Shutter synchronized for flash bulbs and speedlight. Built-in magnifier for really sharp focusing. Sports-type eye-level finder permits quick action pictures.

Takes 12 color or black-and-white photos on 120 film . . . also color slides. Metal body, leatherette covering. Made in Japan. Uses series 5 filters, no adapter.

- 3 AR 64—TOWER Camera only.* Shpg. wt. 2 lbs. . . . \$18.95
- 3 AR 8706—TOWER B-C Flash Unit for camera above. With battery, extra Kodak-type tip. Uses M2 or No. 5 bulbs. Plastic case included. Shpg. wt. 8 oz. . . . \$5.95
- 3 AR 8334—Leather Case for camera above. Wt. 12 oz. 4.75
- 3 AR 06225—3-piece Outfit*. Includes camera, leather case, Tower flash unit. Shpg. wt. 3 lbs. 8 oz. . . . \$26.00

ONLY 10% DOWN
on Easy Terms

See page 82 for details

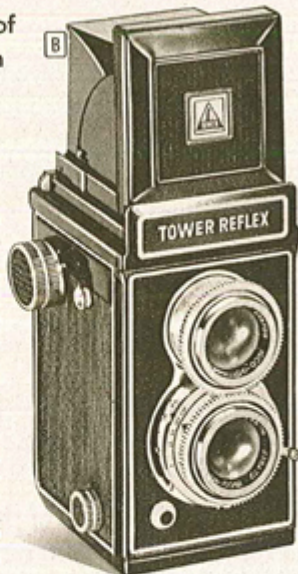
TOWER Reflex with foolproof double-exposure prevention

Camera only **\$22⁵⁰** ~~\$2.50~~ cash down

- F:3.5 anastigmat coated lens
- Focus from 3½ ft. to infinity
- Synchronized shutter speeds 1/25 to 1/200 sec. and time

B Ground glass viewing-focusing screen shows exact picture being taken. Synchronized for flash bulb and speedlight. Hood shields ground glass, improves image brilliance. Turning lens-front moves matched twin lenses for automatic focusing. Metal body, leatherette covering. Takes 12 prints 3½ inches square on 120 color or black-and-white roll film. Made in Germany. Uses series 6 filters, 1¼ inch adapter.

- 3 AR 030—TOWER 30 Camera only. Shipping weight 3 pounds. . . . \$22.50
- 3 AR 06208—3-piece Outfit. Includes TOWER camera, leather case, B-C flash unit. Shpg. wt. 5 lbs. . . . \$28.95



Our Best TOWER Reflex . . . with built-in exposure meter

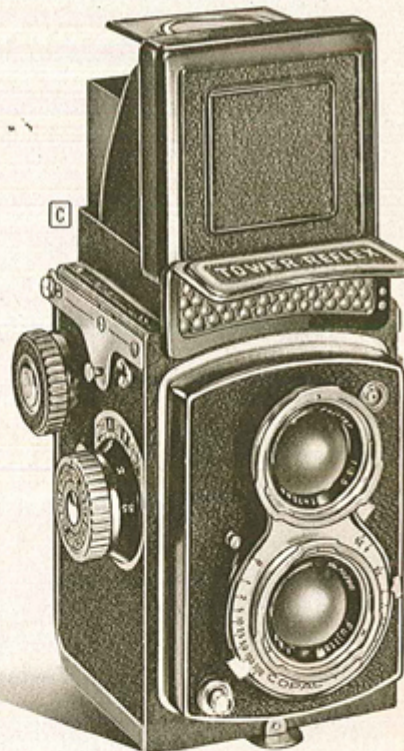
Camera only **\$39⁵⁰** ~~\$4~~ cash down

- 80mm sharp f:3.5 coated lens
- Shutter speeds 1 to 1/300 sec.
- M-X synchronization

C Visual focusing on full size ground glass viewfinder . . . focus from 3½ feet to infinity. Automatic film stop. Dial designates film speeds. Pop-up metal hood shields ground glass. Built-in meter permits accurate exposure. Metal body, leatherette covering. Uses flash unit 3 AR 8706 and carrying case 3 AR 8334 above.

Takes 12 prints 3½ in. square on 120 color or black-and-white roll film. Made in Germany. Uses series 5 filters, no adapter needed.

- 3 AR 065—TOWER 65 Camera only.* Shipping weight 2 lbs. 6 oz. . . . \$39.50
- 3 AR 06264—3-piece Outfit.* Includes TOWER camera, leather case and flash unit. Shpg. wt. 4 lbs. . . . \$45.50



Why buy a Twin-lens Reflex?

Ground Glass Focusing

You get a big, clear view of your picture for better composition . . . and you actually focus on the brilliant ground glass.

Two Kinds of Viewing

For action shots there's often an eye-level viewfinder; for normal shots, big glass screen allows camera to be held at waist.

Square Format

Offers maximum flexibility in composing your snapshots in the viewfinder . . . without any shifting in camera position.

Large Prints

In color or black-and-white, you get beautiful prints that measure 3½x3½ inches. Clear, sharp enlargements to 11x14 in.