

Sears Tower Hide Away

Fabricant (si # de la marque) :		Pays de fabrication :	Etats-Unis
Début de fabrication :	1961	Fin de fabrication :	0
Rareté :	Rare	Page du McKeown :	-
Type d'appareil :	Box		

Film

Type de film :	127	Nombre maxi de vues :	
Format :	4 x 4 cm	Format :	
Format :		Format :	
Avancement :	Molette/CIÃ©	Position :	Sur la semelle
Rembobinage :	Non	Position :	-

Exposition

Cellule :	Non	Position :	
Sensibilité :			

Obturbateur

Marque de l'obturateur :		Modèle de l'obturateur :	
Type d'obturateur :		Vitesses :	

Objectif

Type d'objectif :		Montage de l'objectif :	
Marque de l'objectif :		Modèle de l'objectif :	
Monture d'objectif :		Mode de map :	Fixfocus
Focale :		Ouverture maxi :	

Divers

Type de pile :		Couleur du soufflet :	
Forme du soufflet :		Décentrement horizontal :	
Décentrement vertical :		Second viseur :	
Type de viseur :	Interne fixe		

Le Tower Hide-Away a la même base de fabrication que le Official Boy Scout 3-Way de Herbert Gorge.

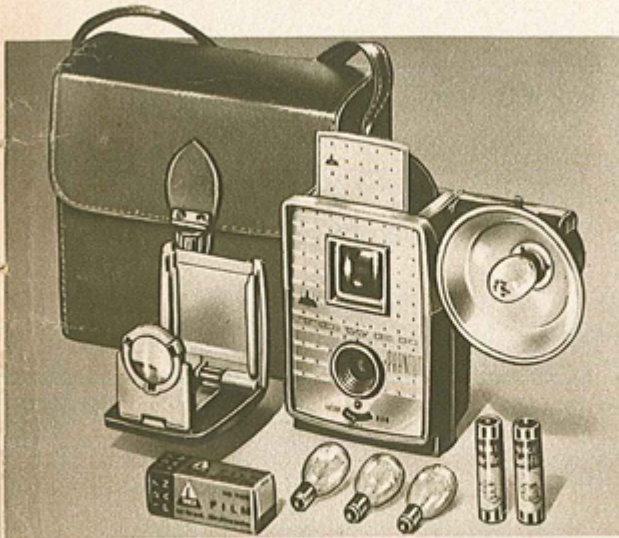
Sous un volet se cache un flash magnésique.

L'appareil est gris (deux tons) et vert.

www.collection-appareils.fr

www.collection-appareils.fr

Shoot color or black and white . . . Inexpensive Box Camera Outfits



Complete TOWER Phantom Reflex Outfit

\$789

It's easy to take beautiful pictures when you can compose your scene in a bright, full-picture-size reflex viewfinder. Hood snaps shut to protect viewfinder. Take 12 sharp 3½x3½-in. pictures or 2x2-in. color super slides on 127 film. Fixed-focus lens. Switch sets lens for color or black and white film. Shoot as close as 5 ft. Take pictures indoors or at night with flash attachment. Uses M2 bulbs. Camera body of durable, high-impact plastic in pleasing, two-tone green.

You get all this in the outfit: the camera, flash attachment, 4 M2 bulbs, 2 penlight batteries, 1 roll 127 black and white film, gadget bag and 2x2-inch slide viewer.

3 C 7946—TOWER Phantom Outfit. Shpg. wt. 1 lb. 6 oz. . . \$7.89

IMAGINE!

A Camera with built-in flash
plus everything you need

All for Only \$595

Complete Outfit with
TOWER Hide Away Camera

- Cover up . . . you're ready to take indoor or outdoor flash pictures
- Cover down . . . flash stays clean and protected when not in use

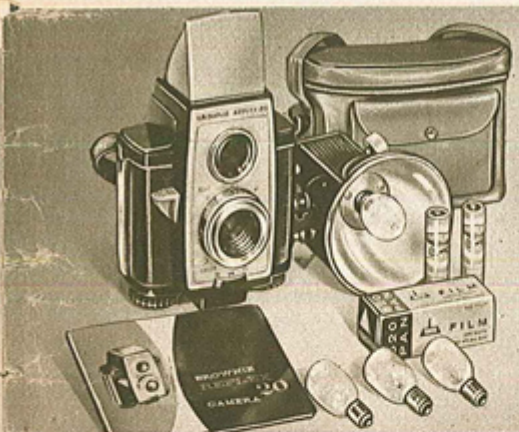
For this low price you get a complete outfit that lets you shoot pictures all day . . . indoors or out. And you can take beautiful color snapshots or slides as well as sharp black and white pictures. You'll get twelve 3½x3½-inch prints or 2x2-inch color super slides on 127 film. Flash uses economical M2 bulbs.

Take pictures as close as 5 feet away to as far as the eye can see . . . fixed-focus lens makes everything sharp . . . without adjustments.

Sturdily built of high-impact plastic in attractive two-tone gray and green.

Complete outfit includes: Hide Away camera with built-in flash; adjustable neck strap; 1 roll of black and white film, 4 flash bulbs, 2 flash batteries, pocket-size slide viewer, gadget bag with shoulder strap. Packaged in attractive gift box.

3 C 7945—Shipping weight 1 lb. 8 oz. . . \$5.95



Brownie Reflex 20 . . . big view screen

Outfit \$2195 \$2.50
cash down

Extremely easy to aim and compose on large 1¾x1¾-in., shaded viewfinder . . . marked for taking slides. Fold-down hood. Get 12 pictures on 620 film, 3½x3½-in. black and white or color prints or jumbo 2¼x2¼-in. slides. You control the exposure with 3 lens settings. Zone focusing for close-ups, groups or scenes. No double exposure, automatic film advance stop. Black plastic with aluminum-finish trim.

Takes series 6 filters. Use 1½-in. slip-on adapter (see pg. 60). Complete outfit includes camera, neck strap, flash gun, 4 bulbs, 2 batteries, 1 roll black and white film, gadget bag, instructions.

3 C 7984—Shipping weight 2 lbs. 8 oz. . . \$21.95

3 C 7983—Camera only. Shpg. wt. 2 lbs. . . 16.50

3 C 8956—Flash Gun for above. Shpg. wt. 6 oz. 2.49



Brownie Flash 20 . . . built-in flash

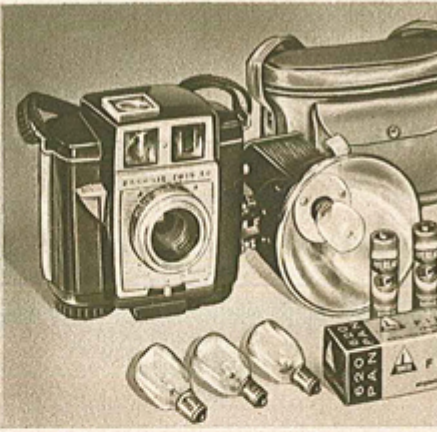
Outfit \$1695

Nothing to attach, the flash goes along. You control your shots, get more precise results with 3 adjustable lens openings and click-stop zone focusing that makes your subject stand out sharply against background. Viewfinder marked for slide picture area. Take 12 black and white or color prints (3½x3½-in.) or jumbo 2¼x2¼-inch slides on large 620 film. No double exposure, positive film advance stop.

Plastic body. Adjustable neck strap. Takes series 6 filters with 1½-in. slip-on type adapter sold on pg. 60. Complete outfit includes camera, 4 flash bulbs, 2 batteries, 1 roll black and white film, brown plastic gadget bag, instructions.

3 C 7991—Outfit. Shipping weight 2 lbs. 8 oz. . . \$16.95

3 C 7990—Camera only. Shpg. wt. 1 lb. 8 oz. . . 13.95



Brownie Twin 20 . . . two-way viewing

Outfit \$1595

Use steady, waist-level, reflex viewing or fast eye level viewing to suit each picture-taking situation.

Get precise exposure and focus with 3 adjustable lens openings and easy-to-use zone-focusing. Take 12 color or black and white pictures 3½x3½-in. or jumbo 2¼x2¼-in. color slides on large 620 film. No double exposure.

Black plastic body with metal trim. Takes series 6 filters. Uses 1½-in. filter adapter on page 60. Complete outfit includes camera, flash gun, 4 M2 flash bulbs, 2 batteries, 1 roll black and white film and brown plastic gadget bag.

3 C 7986—Outfit. Shpg. wt. 2 lbs. 8 oz. . . \$15.95

3 C 7985—Camera only. Shpg. wt. 1 lb. 8 oz. . . 10.95

3 C 8956—Flash Gun for above. Shpg. wt. 6 oz. . . 2.49