

Certo Certotix

Fabricant (si # de la marque) :		Pays de fabrication :	Allemagne
Début de fabrication :	1936	Fin de fabrication :	1936
Rareté :	Peu courant	Page du McKeown :	195
Type d'appareil :	Folding		

Film

Type de film :	120	Nombre maxi de vues :	8
Format :	6 x 9 cm	Format :	
Format :		Format :	
Avancement :	Molette/CIÃ©	Position :	Sur le cotÃ©
Rembobinage :	Non	Position :	-

Exposition

Cellule :	Non	Position :	
Sensibilité :			

Obturateur

Marque de l'obturateur :	Gauthier (AGC)	Modèle de l'obturateur :	Vario
Type d'obturateur :	Central	Vitesses :	1/25 Ã 1/100, B, T

Objectif

Type d'objectif :	Standard	Montage de l'objectif :	Fixe
Marque de l'objectif :	Schneider	Modèle de l'objectif :	Radionar
Monture d'objectif :		Mode de map :	Fixfocus
Focale :		Ouverture maxi :	4,5

Divers

Type de pile :			
Forme du soufflet :	Conique	Couleur du soufflet :	Noir
Décentrement vertical :	Non	Décentrement horizontal :	Non
Type de viseur :	Externe pliant fixe	Second viseur :	Externe Ã double cadre non optique

Ce qu'on peut lire au sujet des noms successifs de ce modèle est confus, car la chronologie évoquée pour les changements ne correspond ni à ce qu'on trouve dans les catalogues, ni aux évolutions techniques sur les appareils.

Le Certotix tel qu'il est présenté sur le catalogue Central Camera Co, de Chicago n'a pas les mêmes jambes de force soutenant l'objectif que les Certix et Certofix que nous connaissons.

CERTOTIX CAMERA



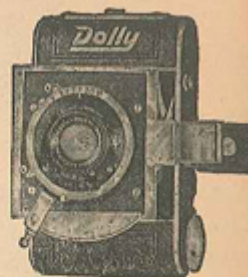
Takes 8 Pictures
Each 2 1/4 x 3 1/4"

\$25.00 Value A remarkable value with many important features, as listed below.
SPECIAL \$18.50

All metal box, leather covered, metal bound edges—snaps open ready for use. Genuine leather bellows. Radionar 4 1/8-inch F:4.5 Anastigmat Lens in focusing mount.

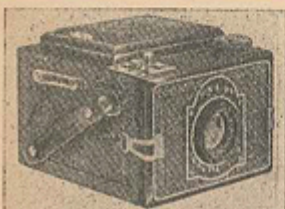
Vario shutter: 1/25, 1/50, 1/1,000, T. & B. Self-timer and cable release. Two finders: Direct view and waist level finders. Uses No. 120 roll film. Easy to load, spring controlled spool retainers—sold with cardboard case suitable for use as Carrying Case. Size 6x2 7/8 x 1 3/8 in. Wt. 20 oz. Shpg. wt. 3 1/2 lbs.

DOLLY MINIATURE



Small, compact and light, the Dolly is the utmost in convenience, reflecting in its workmanship and finish high standards of optical and mechanical excellence. Opens at the touch of a button, always ready for that candid shot. Measures only 2 1/2 x 4 1/4 x 1 3/8 inches and slips easily into pocket or purse. Weighs only 13 ounces.

Takes 16 pictures size 1 5/8 x 1 1/4 in on 8 exposure No. 127 roll film. Shpg. wt. 2 lbs. With 5cm F:4.5 Certar Anas. Lens in Vario Shutter (1/25, 1/50, 1/100, T. & B.) \$14.50 With 5cm F:3.5 Schneider Radionar Lens in Compur Shutter (1-1/300, T. & B.) 30.00 With 4.5cm F:2 Schneider Xenon Lens in Compur Shutter (1-1/500, T. & B.) 65.00



K. W. ROLL FILM REFLEX

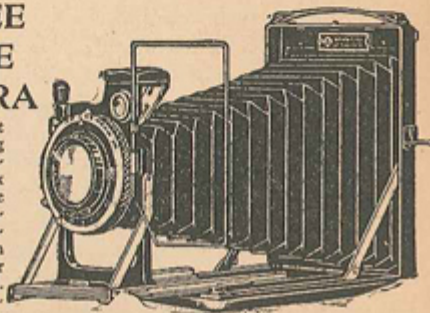
Takes 8 Pictures
Each 2 1/4 x 3 1/4"

Here you have the advantages of a reflecting camera at a popular price. You look down into the reflector, and can see the object until the very instant of exposure. All metal shutter.

Visual focusing in the reflecting mirror and ground glass enables you to see beforehand just what you are getting in the picture and assures sharp, clear cut negatives. Camera beautifully finished, covered with pin-grain seal leather! nickel plated trim. Barrel-type shutter (1/25, 1/50, 1/100 B. & T.).

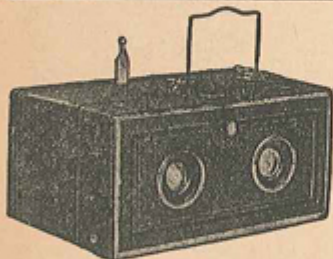
Uses standard 8 exposure 120 roll film. Size 4 7/8 x 3 5/8 x 4 5/8 in. Wt. 30 oz. Shpg. wt. 4 1/2 lbs. K-W with 4 1/8-inch F:6.3 Schneider Anastigmat Lens \$17.50 K-W with 4 1/8-inch F:4.5 Schneider Anastigmat Lens 26.50 Carrying Case 4.00

KAWEE PLATE CAMERA



A compact Pocket-fitting camera, measuring only 4 1/2 x 3 1/2 x 1 in. Single or double extension with delayed action Pronto Shutter (1/25, 1/50, T. & B.) or delayed action Compur Shutter 1-1/250, T. & B. Wire and brilliant finders. Complete with film pack adapter, 3 plate holders and focusing back. Size picture 6 1/2 x 9cm (2 1/4 x 3 1/4). Wt. 14 oz. Shpg. wt. 3 lbs. With 4 1/8-inch F:6.3 in Pronto. Single extension.

Without plate holders or focusing back \$19.50 With 4 1/8-inch F:4.5 Schneider in Compur. Single extension 32.50 With 4 1/8-inch F:4.5 Schneider in Compur. Double extension 44.50 Carrying Case 4.50 Sky Filter (Rhamstein graduated) 5.00



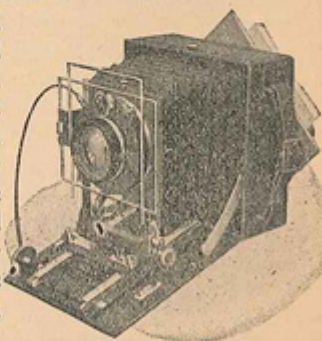
EHO STEREO CAMERA Complete with Viewer \$12.50

Equipped with a matched set of Duplar lenses. Two finders are part of the equipment—a magnifying, brilliant optical glass viewfinder, and a wire direct vision finder. It has T spirit level and it uses regular 2 1/4 x 3 1/4 roll film. Makes 8 stereo pictures, size 2 1/4 x 1 1/8 on the roll. Provided with a supplementary focusing stereoscope of fine construction for viewing the pictures made with the Eho.

Camera size 2 3/4 x 3 1/2 x 6 inches. Weight 20 oz. Shpg. wt. 3 1/4 lbs.

LINHOF-PRECISION CAMERA

Triple extension. Rising, falling and lateral movements. Interchangeable with other lenses. Revolving back, focusing screen, wire frame finder and spirit level. Complete with 3 plate holders and film pack adapter.



6 1/2 x 9cm with 12cm Tessar F:4.5 in Compur (1-1/250, T. & B.) \$130.00 9x12cm with 15cm Xenar F:3.5 in. Compur (1-1/250, T. & B.) \$160.00